

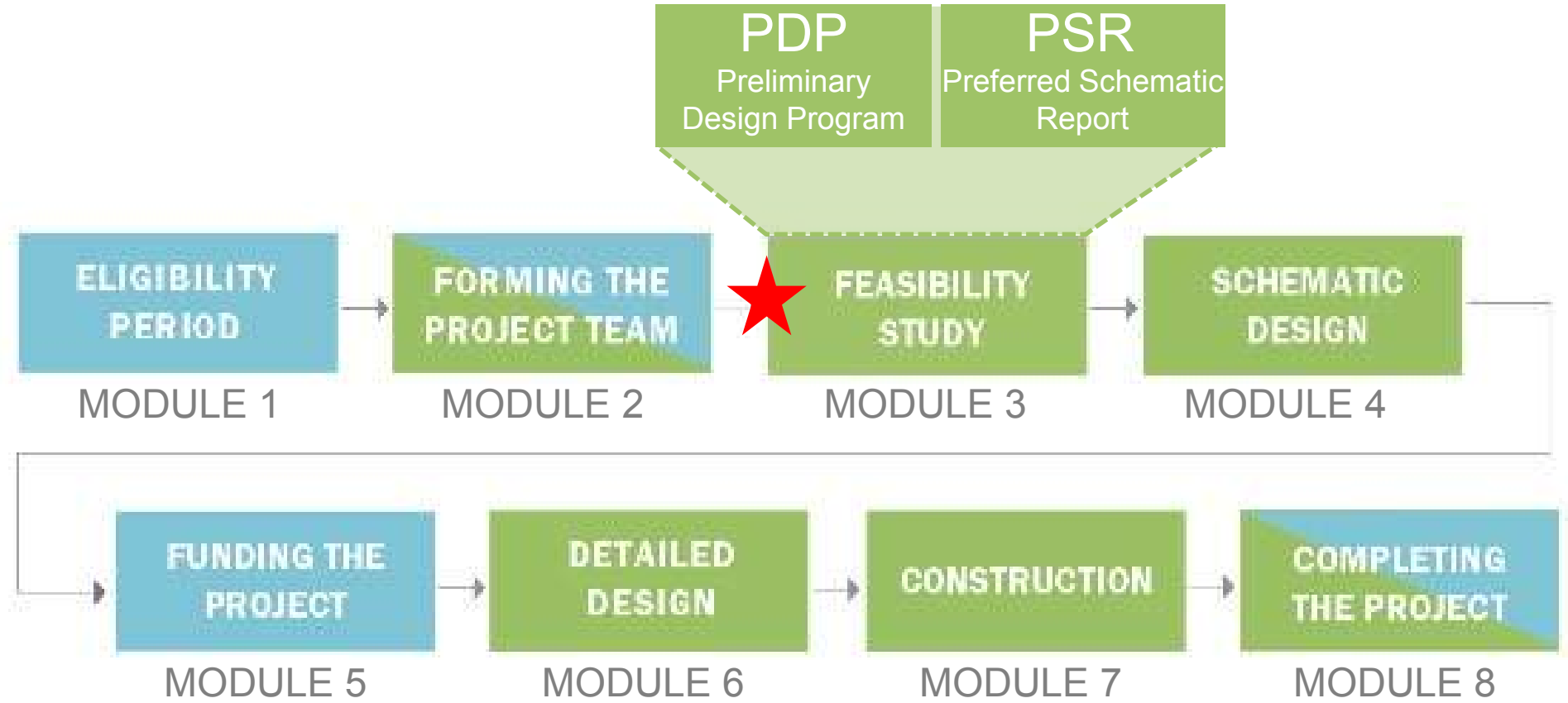


Massachusetts School
Building Authority



MSBA Building Process

Steps primarily for:



MSBA PROCESS

★ CURRENT PROJECT STATUS

DOHERTY SCHEDULE



2019 M A M J J A S O N D 2020 J F M A M J J A S O N D 2021 J F M A M J J A S O N D 2022 J F M A M J J A S O N D 2023 J F M A M J J A S O N D 2024 J F M A M J J A S O N D



FEASIBILITY STUDY SBC VOTES

SBC Vote to Submit PDP to MSBA:
Sept. 2019



MSBA Vote

SBC Vote to Submit SD Package to MSBA:
July 2020



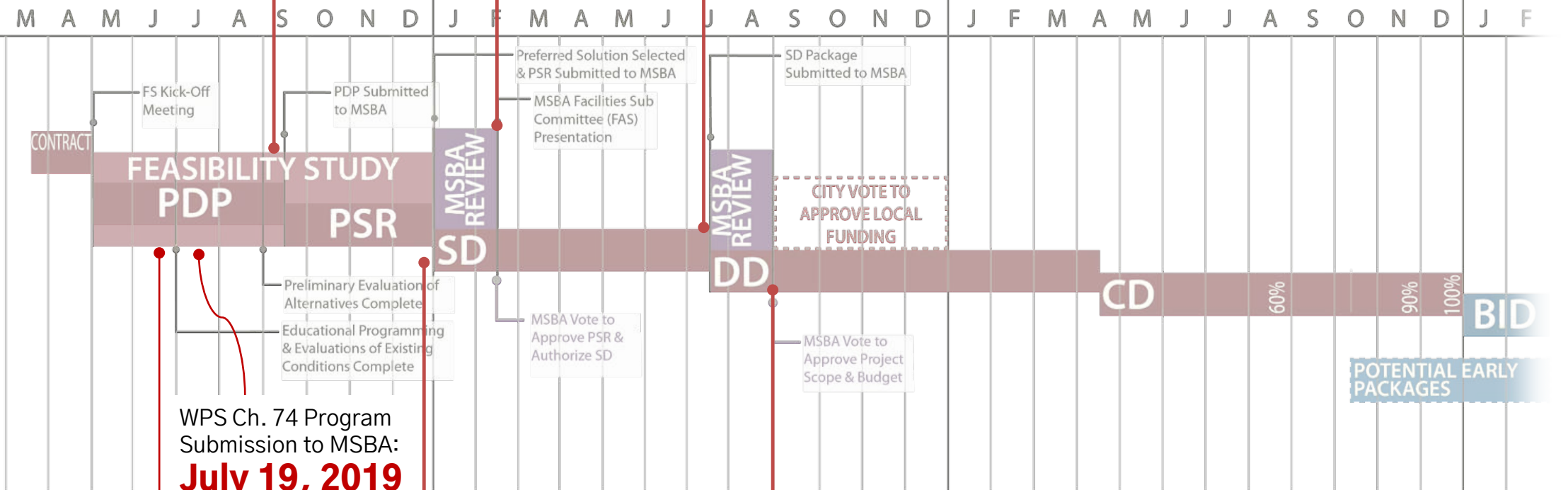
MSBA Vote

2019

2020

2021

2022



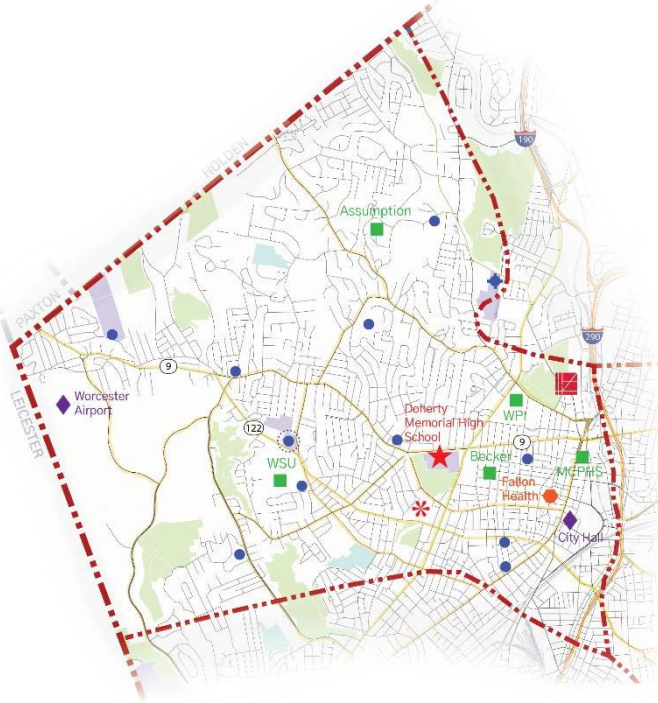
Update Meeting in June

SBC Vote to Submit PSR to MSBA:
December 2019

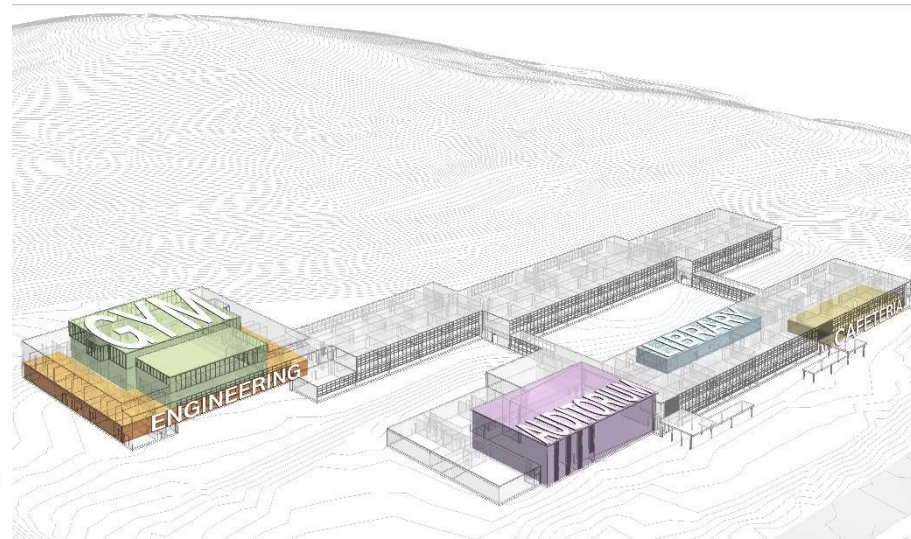


PDP TASKS

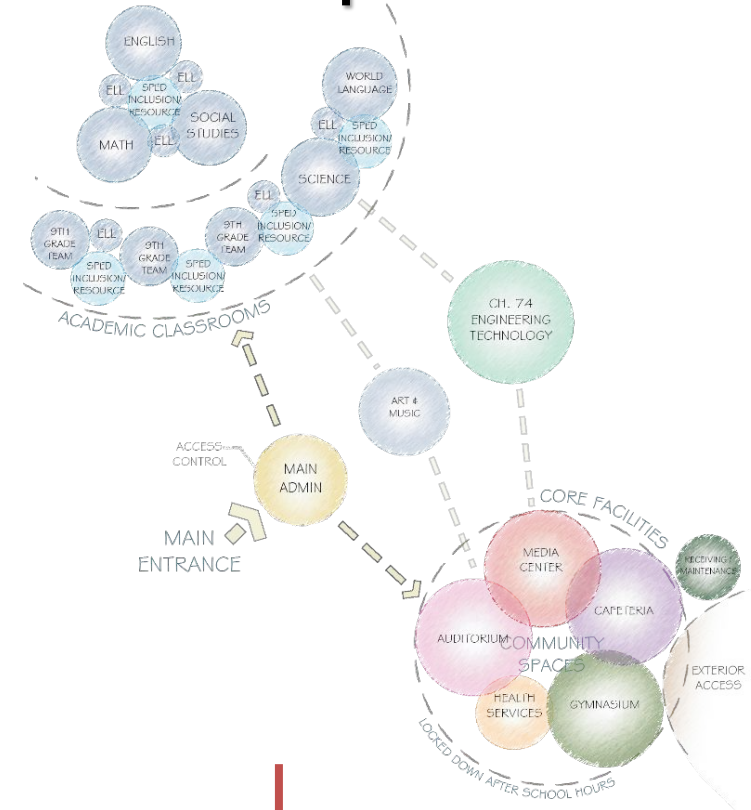
Alternate Site Evaluation



Evaluation of Existing Building & Site



Program Development



RECOMMENDATION OF OPTIONS FOR FURTHER STUDY



Doherty Memorial High School Visioning

* Required

Staff & Teacher Survey

Lamoureux Pagano Associates Architects (LPA|A) is excited to be selected as the architect to conduct a Feasibility Study for the Doherty Memorial High School improvements. Through the study process, it will be determined if an addition/renovation or a new construction option is best for a 1670 student high school.

In order to develop the program for this important project, we ask that you share your vision of Doherty's future educational goals and priorities through the questionnaire below. The questionnaire should take about 15 minutes to complete, please provide your input by May 31, 2019.

What is your name?

Your answer

What is your Department? *

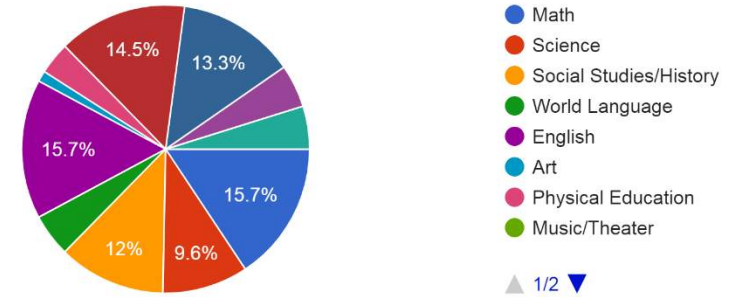
Choose

Which grade(s) do you teach?

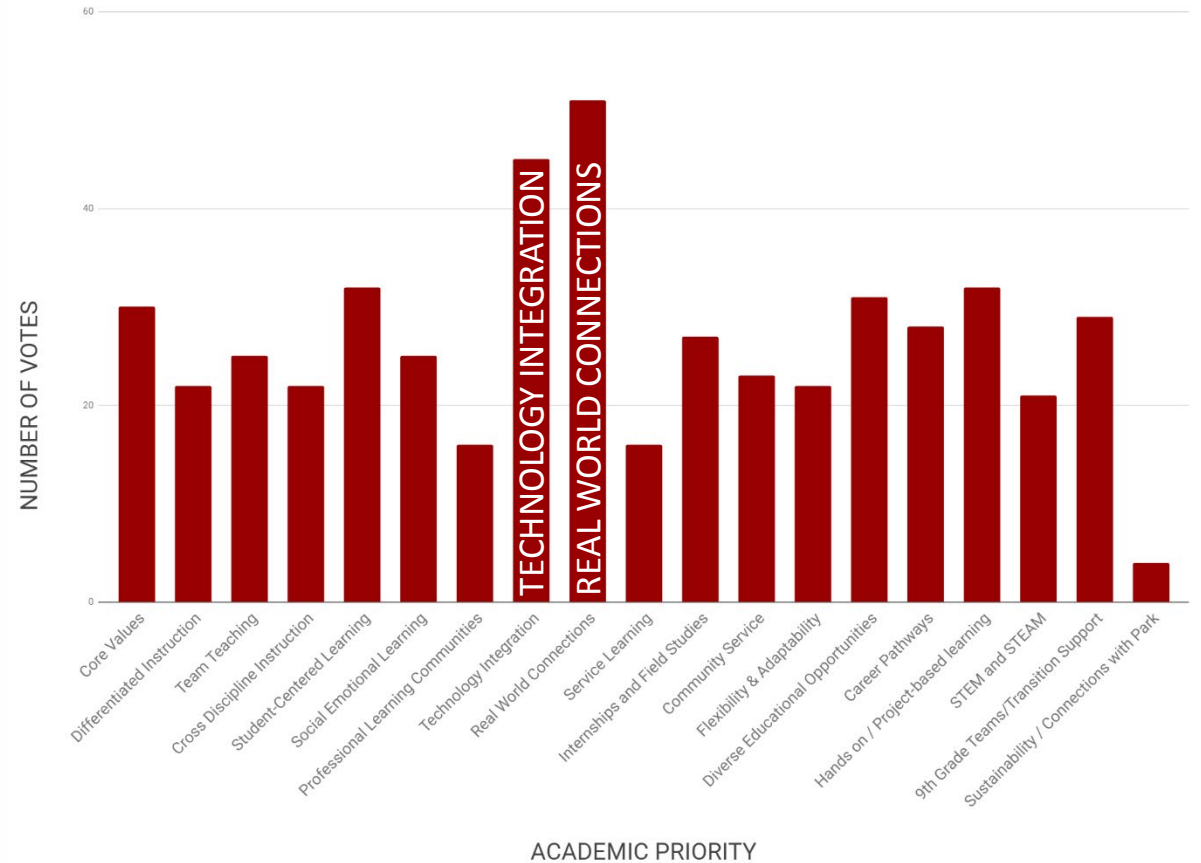
- 9th
- 10th
- 11th
- 12th

What is your Department?

83 responses



STAFF VISION OF ACADEMIC PRIORITIES



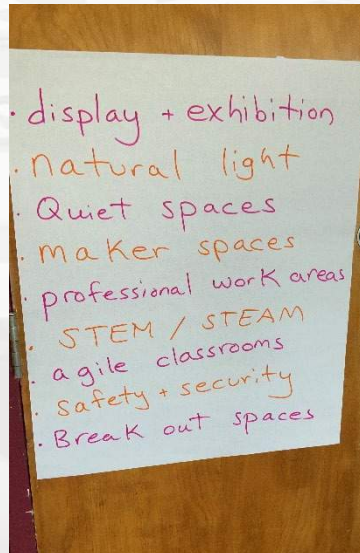
VISIONING WORKSHOP 1: LEARNING GOALS AND BEST PRACTICES

PRIORITY GOALS:

- **COMMUNITY USE**
- **WELCOMING & INCLUSIVE**
- **SUPPORTING INNOVATIVE PROGRAMMING**
- **FLEXIBLE, ADAPTABLE & SUSTAINABLE**
- **CAREER PATHWAYS**
- **WELLNESS & ATHLETICS**
- **IMPROVED BUILDING FUNCTIONALITY**



VISIONING WORKSHOP 2: DESIGN PATTERNS AND GUIDING PRINCIPLES



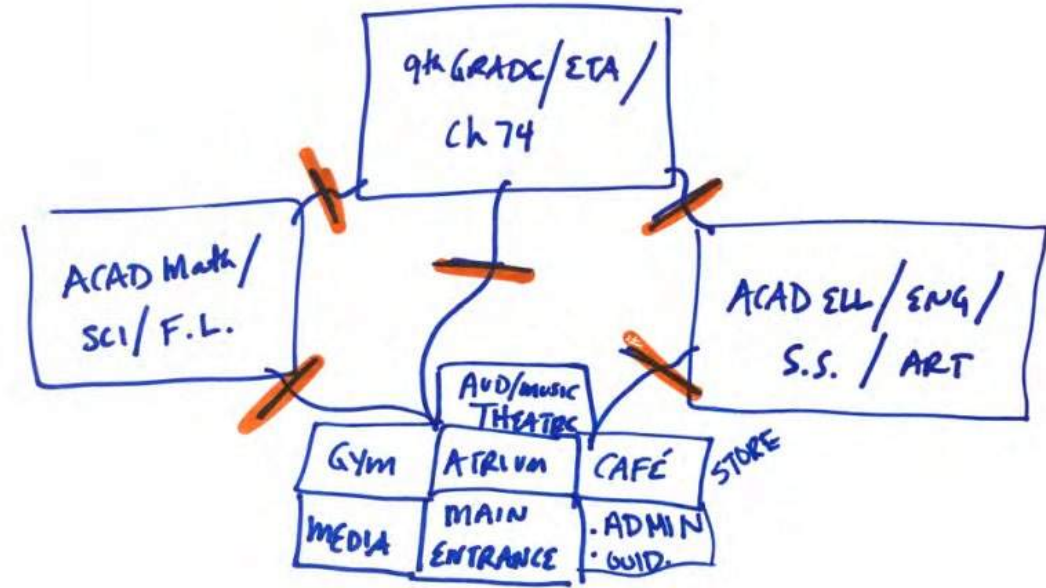
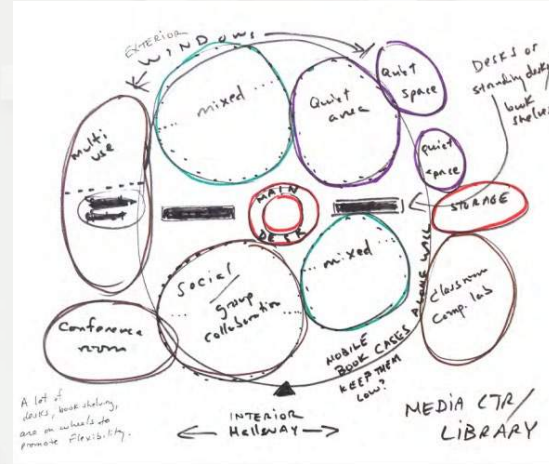
PRIORITY FUTURE-READY DESIGN PATTERNS:

- **CLUSTERS OF LEARNING**
- **SUSTAINABILITY**
- **DISPLAY & EXHIBITION**
- **WELCOMING ARRIVAL**
- **COMMUNITY ACCESS**
- **AGILE CLASSROOMS**
- **SAFETY AND SECURITY**
- **INDOOR/OUTDOOR CONNECTIONS**
- **BREAK-OUT SPACES**

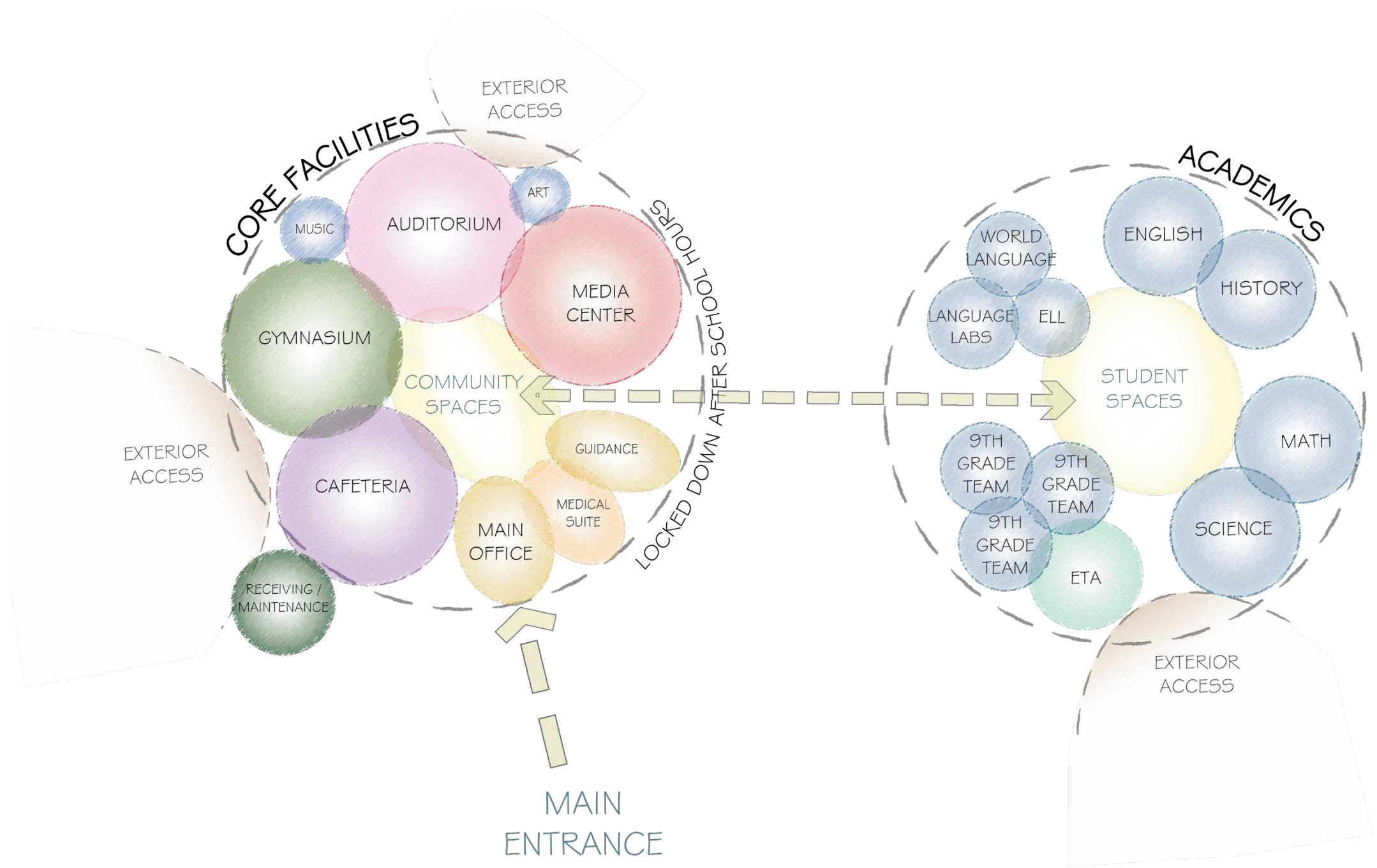
VISIONING WORKSHOP 3: KEY SPACES, ADJACENCIES AND CONCEPTUAL DESIGN DIRECTIONS

GUIDING DESIGN PRINCIPALS 2.0:

- MASTERY BASED LEARNING
- REAL WORLD CONNECTIONS
- PERSONALIZATION AND OWNERSHIP
- SCHOOL AS A COMMUNITY RESOURCE
- FLEXIBILITY AND UTILITY
- SUSTAINABILITY & OUTDOOR CONNECTIONS



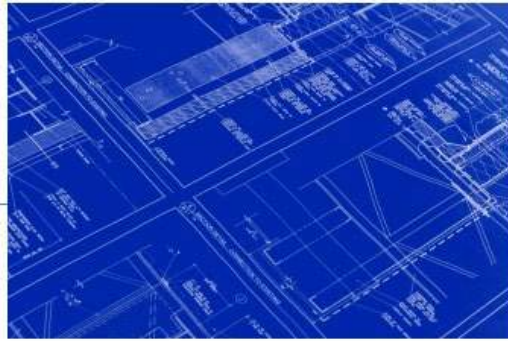
BUBBLE DIAGRAMS



PROPOSED CHAPTER 74 PROGRAMS:

The Central MA
Regional Workforce
Blueprint

2018-2022



March, 2018



ENGINEERING & TECHNOLOGY ACADEMY

Enrollment: 400 Students (Existing to expanded)

MARKETING MANAGEMENT & FINANCE

Enrollment: 200 Students

PROGRAMMING & WEB DEVELOPMENT

Enrollment: 200 Students

CONSTRUCTION CRAFT LABORER

Enrollment: 150 Students

PROPOSED ADVANCED ACADEMY:

ADVANCED ACADEMY IN BIOTECHNOLOGY

District-Wide Program

Launches in 2022 at Forest Grove Middle School

Invitation by Test Score, Similar to Goddard Scholars and
Hanover Academy of the Arts

Enrollment: 200 students (50 students per grade)

WORCESTER
PUBLIC SCHOOLS

Hanover Insurance
Academy of the Arts



SITE PROGRAM COMPONENTS:

Building

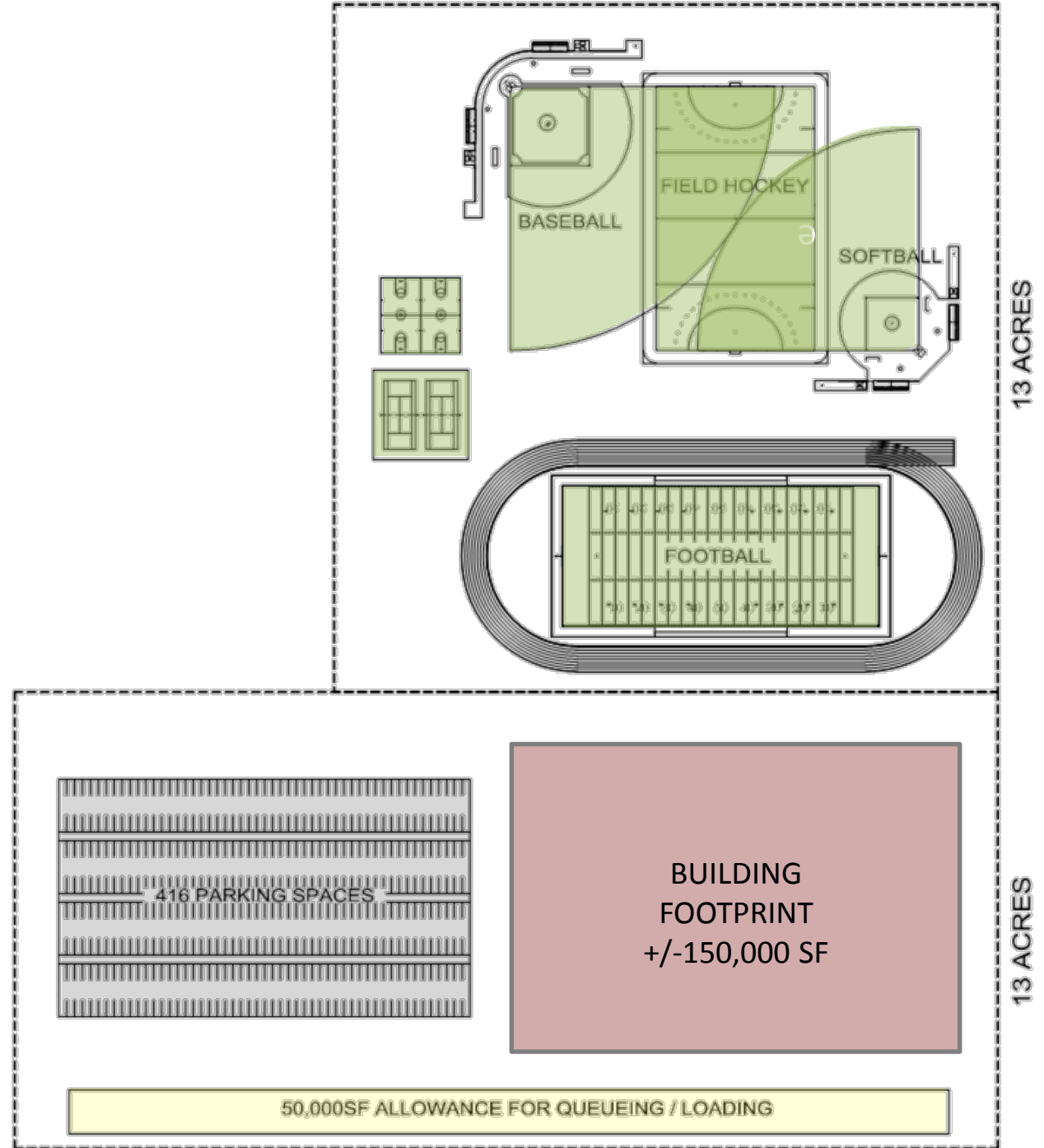
- ~400,000 SF Gross – Final SF TBD
- 140,000–180,000 SF – Final Footprint TBD
- Main Entrance & SPED Drop Off
- NFPA 1/MASS Perimeter Access 100% 20’

Parking

- 250 (Student + Visitors)
- 180 Staff

Separate Loops (Bus, Parent Drop Off Sped)

- 8–10 Full Size Buses
- 5 SPED Buses
- Parent Drop-off/Pick-up
- Loading & Receiving



PHASE I SITE SELECTION PROCESS

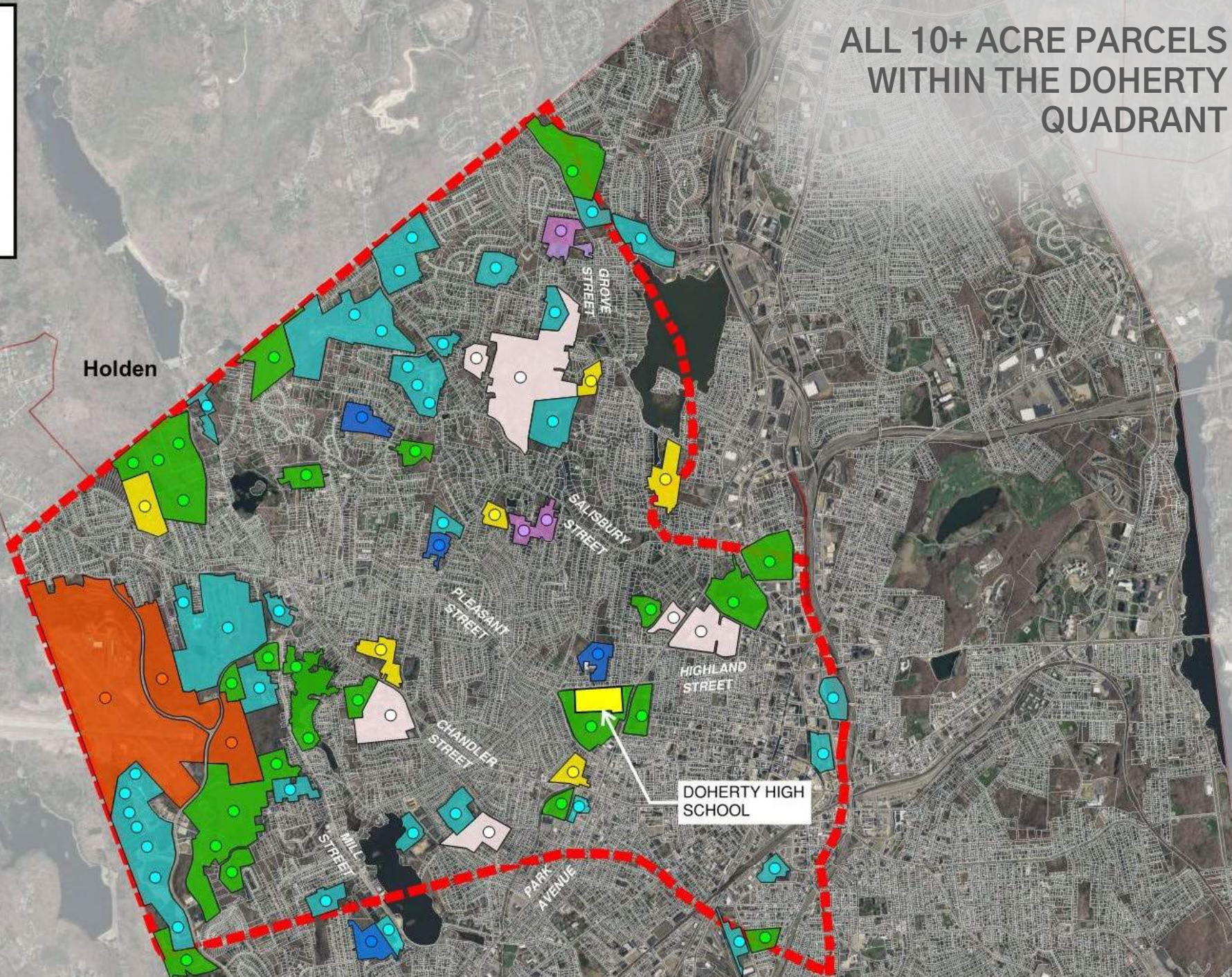
PARCEL KEY

- City of Worcester Public Schools
- Private K-12 Schools
- Colleges / Universities
- Privately Owned - Developed
- Privately Owned - Undeveloped
- MassPort
- Open Space

ALL 10+ ACRE PARCELS
WITHIN THE DOHERTY
QUADRANT

Holden
Paxton

Leicester



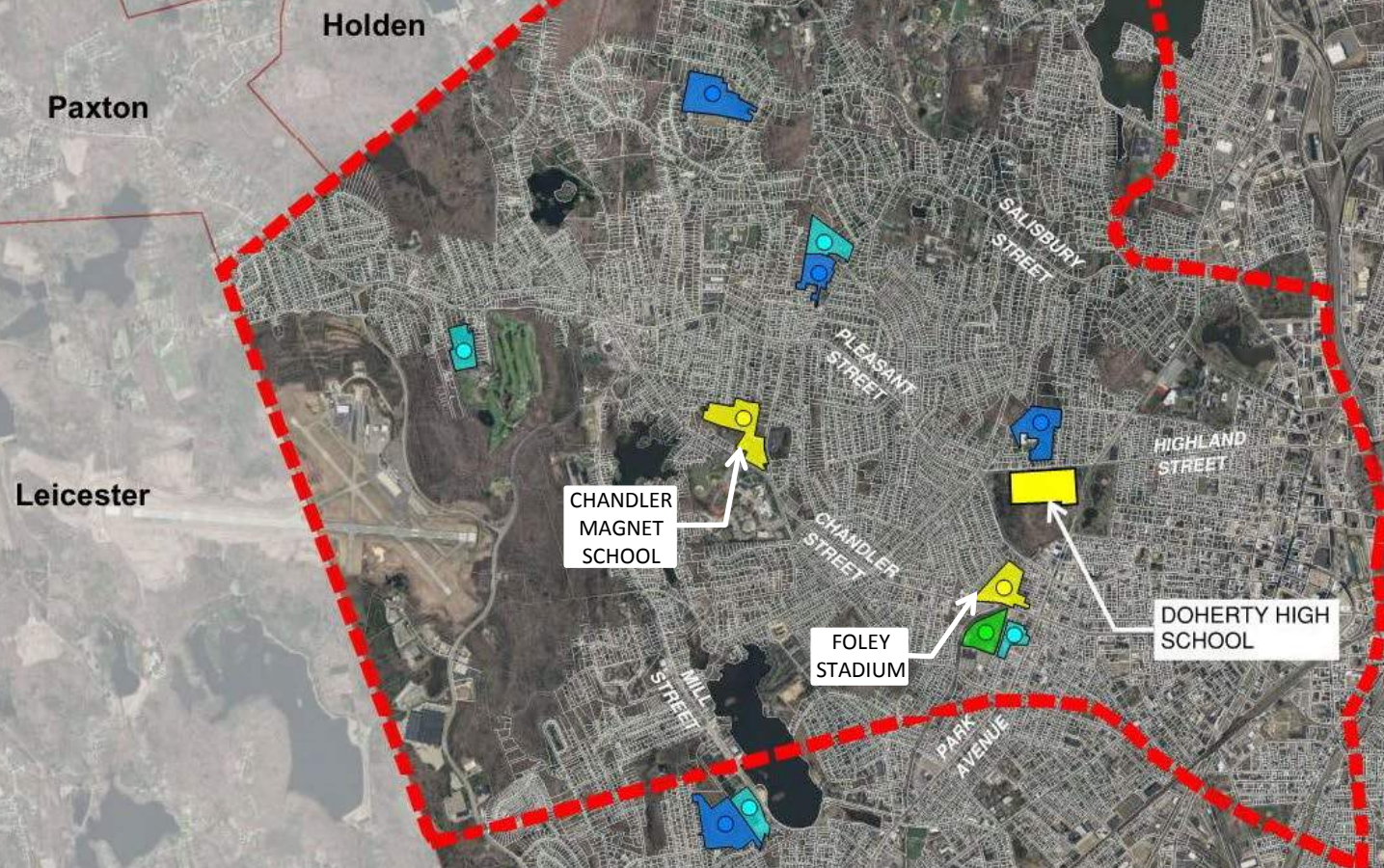
DOHERTY HIGH SCHOOL

PHASE I SITE SELECTION PROCESS

PARCEL KEY

- City of Worcester Public Schools
- Private K-12 Schools
- Colleges / Universities
- Privately Owned - Developed
- Privately Owned - Undeveloped
- MassPort
- Open Space

ELIMINATED PARK LAND,
PREVIOUSLY DEVELOPED,
AND PROHIBITIVE
OWNERSHIP



SITE RANKING PROCESS

TOPOGRAPHY, ORIENTATION & ENVIRONMENTAL ISSUES

ADJACENT USES & NEIGHBORHOOD IMPACT

ABILITY TO MEET BUILDING AND SITE PROGRAM

BUILDING MASS, SITING AND FIELDS

TRAFFIC IMPACTS & ACCESS

BUS & PARENT VEHICULAR CIRCULATION & PARKING

UTILITIES & DEVELOPMENT ISSUES

ACQUISITION ISSUES, NEGOTIATION & EXPANSION

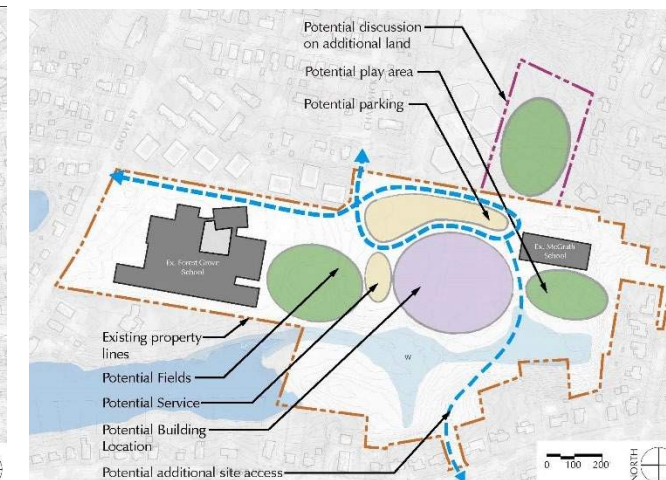
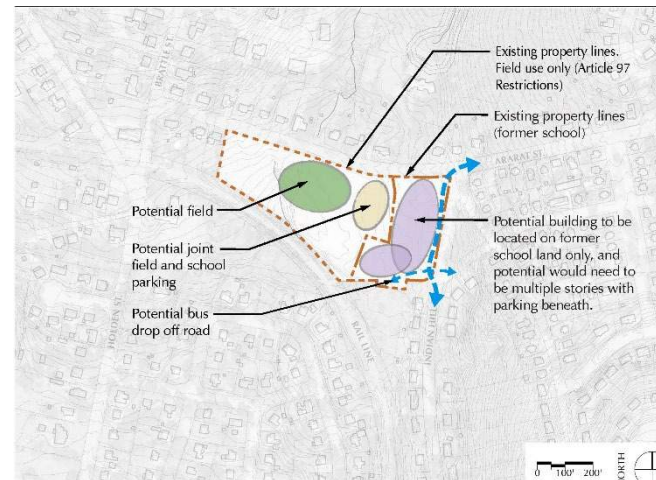
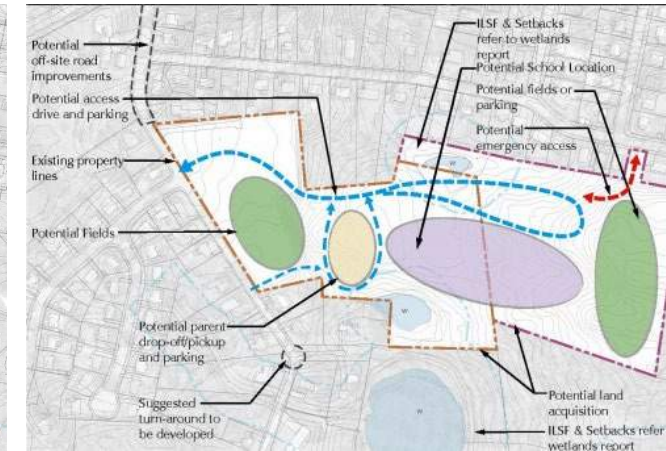
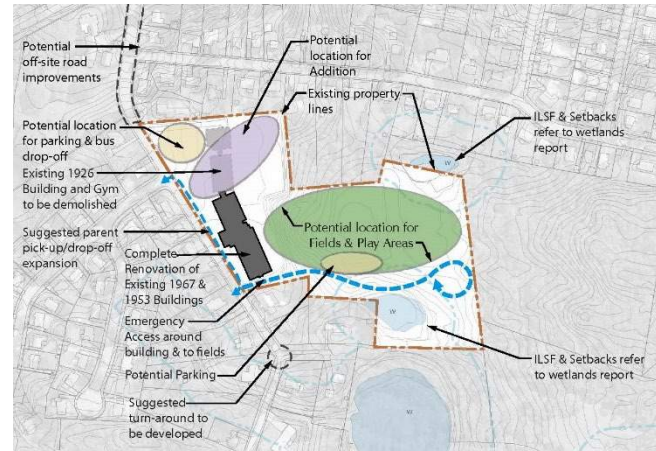
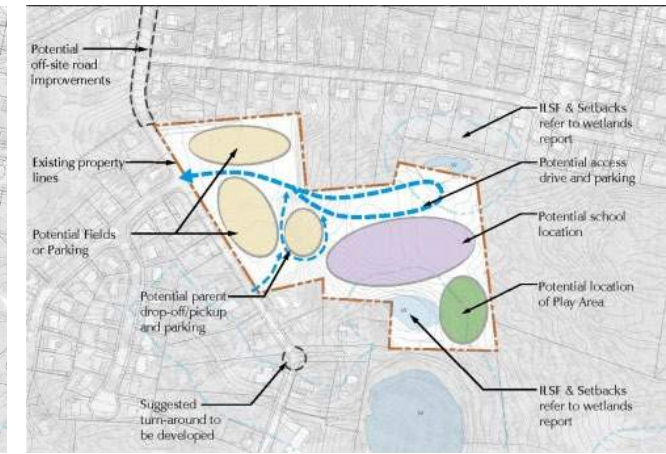
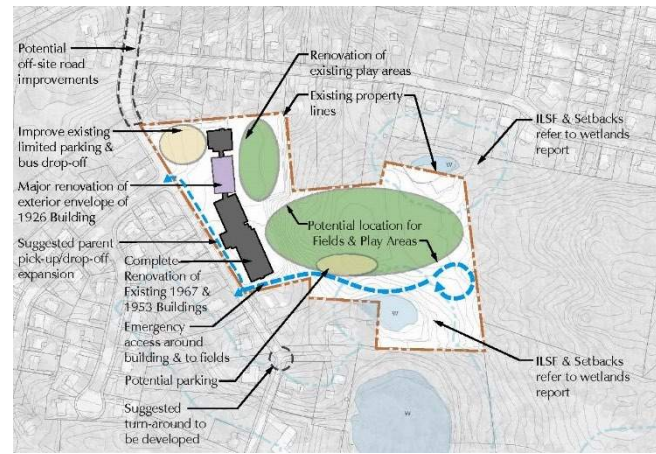
COMPARATIVE STAFF & STUDENT IMPACT (SWING SPACE/PHASING)

OTHER FACTORS PARTICULAR TO THE LOCATION

OBJECTIVE OF THE PDP: DETERMINE WHICH OPTIONS ARE RECOMMENDED FOR FURTHER STUDY

RECOMMENDED OPTIONS MAY INCLUDE:

- **BASE REPAIR**
- **ADDITION RENOVATION**
- **NEW CONSTRUCTION ON EXISTING SITE**
- **NEW CONSTRUCTION ON ALTERNATE SITE(S)**



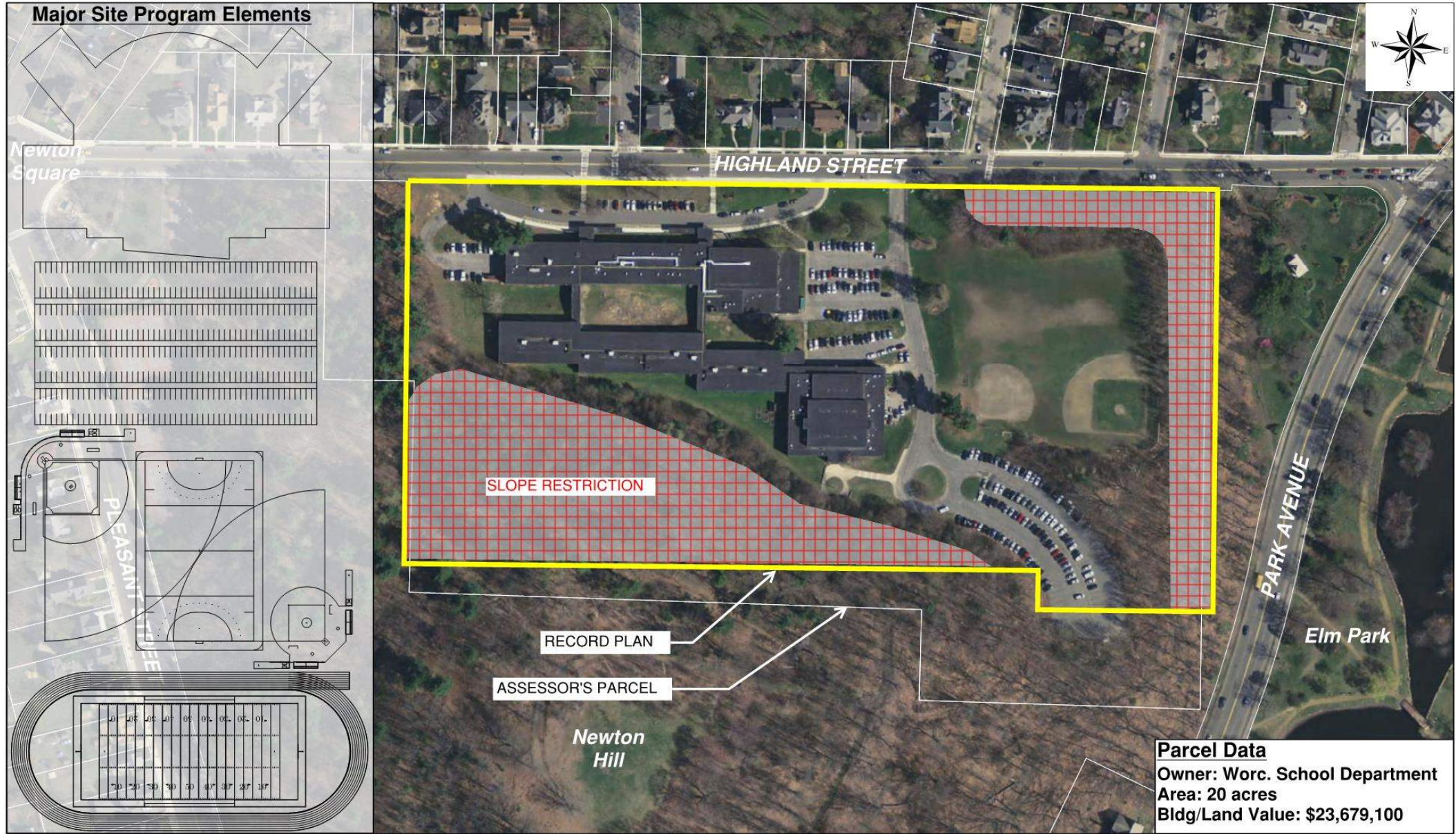
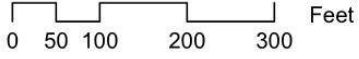


Figure 2: Existing Doherty High School Site
Doherty Memorial High School - Worcester, MA

Nitsch Project #13325



Data Source: MassGIS



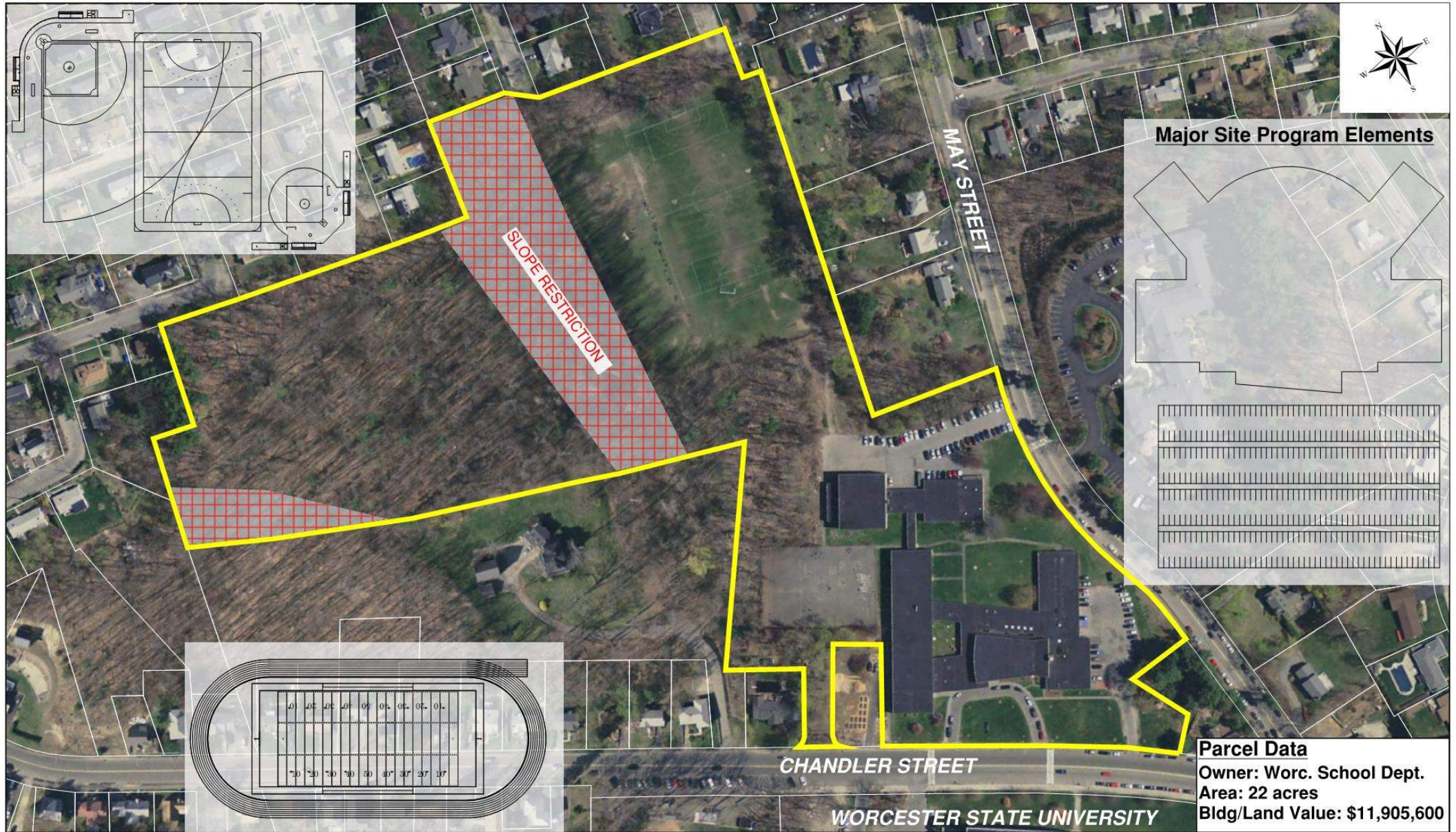
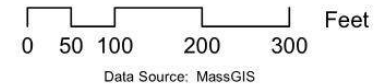


Figure 3-7: 525 Chandler Street
Doherty Memorial High School - Worcester, MA

Nitsch Project #13325



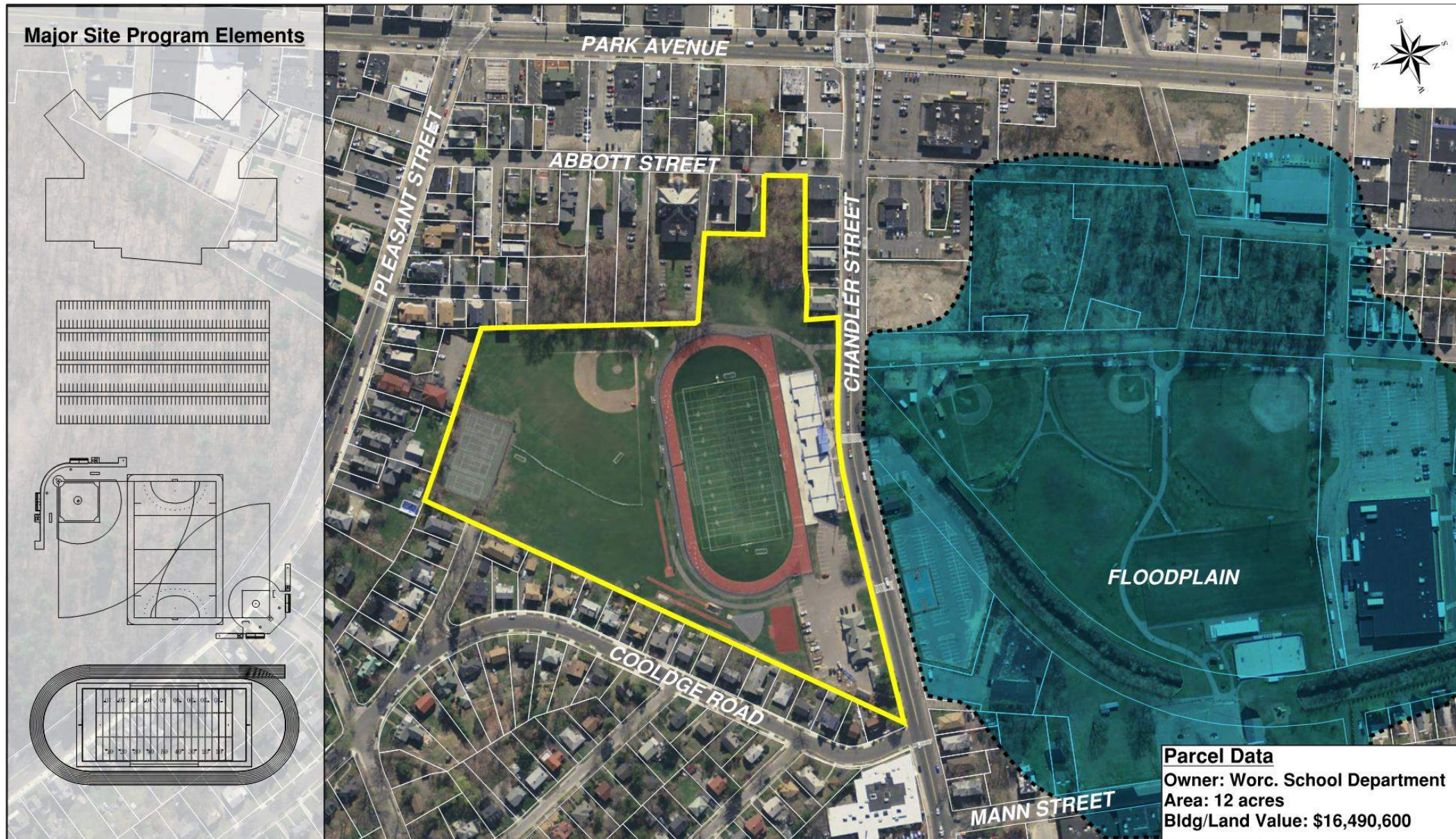


Figure 3-8: 50 Abbott Street
Doherty Memorial High School - Worcester, MA
Nitsch Project #13325



Massachusetts School
Building Authority



Discussion / Question & Answer

