



**BOARD OF ELECTION
COMMISSIONERS MEETING
THURSDAY, MARCH 10, 2022 5:30 P.M.
LEVI LINCOLN CHAMBER, CITY HALL**

Call to Order by the Chairperson

Pledge of Allegiance

Roll Call

Approval of the Minutes of the February 17, 2022

I. New Business:

1. Discussion regarding the nomination paper process for the 2022 State Election.

2. Update on the 2022 Secretary of State VRIS voter Re-Precincting process.

3. Discussion concerning polling locations for the 2022 Election Season.

4. Discussion regarding the request from Commissioner John Stewart on discussing the feasibility of authorizing legal residents who have not been naturalized yet to vote in Elections at the local level.

Adjournment:

Next Meeting Date:

TO PARTICIPATE VIRTUALLY DURING THE MEETING:

PHONE NUMBER: 415-655-0001

ACCESS CODE: 160-935-9156#

ATTENDEE ID: #

Log in via your computer:

<https://cow.webex.com/meet/ElectionCommissionwebex>

Election Commission Meeting- February 17th, 2022 (Virtual Meeting)

Chairperson Commissioner Kimberly Vanderspek (not present)
Vice Chairperson Commissioner Winfred Octave
Commissioner Richard Duffy
Commissioner John Stewart

City Clerk: Nikolin Vangjeli

Pledge of Allegiance

Call to order by the Chairperson, Roll Call: 3 Yeas and 0 Nays.

Motion to Approve the Minutes of the February 3, 2022 meeting, Roll Call: 3 Yeas and 0 Nays.

New Business

1. Vice Chairperson Commissioner Octave recognized the City Clerk who spoke concerning the Item. The City Clerk requested to suspend all public hearings until the other parties are ready, motion to cancel the hearings, Roll call: 3 Yeas and 0 Nays.

Public Participation

No public participants.

Motion to close the hearing, Roll call: 3 Yeas and 0 Nays,

Vice Chairperson Commissioner Octave recognized the City Clerk who spoke concerning the Item. Vice Chairperson Commissioner Octave recognized Commissioner Stewart who spoke concerning the Item. Commissioner Stewart made a motion to recommit the report on the Census blocks, Roll call: 1 Yeas and 2 Nays, Motion Fails.

2. Vice Chairperson Commissioner Octave recognized the City Clerk who spoke concerning the Item. The City Clerk spoke concerning the Election calendar and nomination paper process.
3. Vice Chairperson Commissioner Octave recognized the City Clerk who spoke concerning the Item. The City Clerk shared the dates of the 2022 elections.
4. Vice Chairperson Commissioner Octave recognized the City Clerk who spoke concerning the Item. The City Clerk discussed the planning of the new polling locations.
5. Vice Chairperson Commissioner Octave recognized the City Clerk who spoke concerning the Item. The City Clerk discussed the update to VRIS.
6. Vice Chairperson Commissioner Octave recognized the City Clerk who spoke concerning the Item. The City Clerk discussed the annual street listing. He shared that the city census will be mailing out in the next few days.
7. Vice Chairperson Commissioner Octave recognized the City Clerk who spoke concerning the Item. The City Clerk provided a report on the inactive and active voters in the City of Worcester. Vice Chairperson Commissioner Octave recognized Commissioner Stewart who spoke concerning the Item, and he requested that the city census envelope be reworded/designed.

8. Vice Chairperson Commissioner Octave recognized the City Clerk who spoke concerning the Item. The City Clerk communicated the budget for the additional election equipment that is need for the new precincts. Vice Chairperson Commissioner Octave recognized Commissioner Stewart who made a motion to discuss new election technologies in addition to writing to the Secretary of State to support the use of new technologies in Massachusetts.

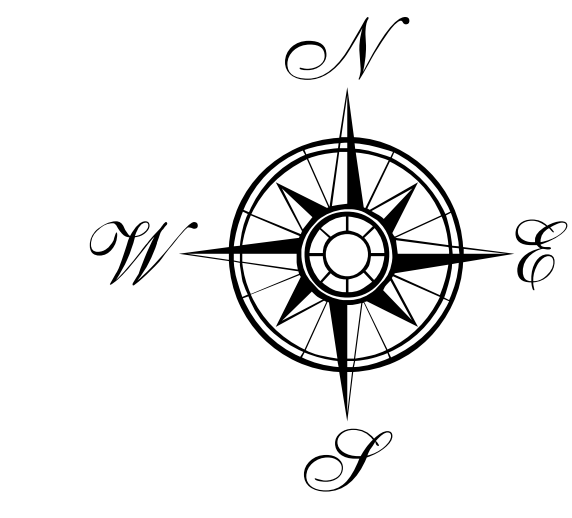
Old Business

1. Vice Chairperson Commissioner Octave recognized the City Clerk who spoke concerning the Item. The City Clerk shared that Human Resources will give a training in April for commissioners. Vice Chairperson Commissioner Octave recognized Commissioner Stewart who spoke concerning the Item.
2. Vice Chairperson Commissioner Octave recognized the City Clerk who spoke concerning the Item. Vice Chairperson Commissioner Octave recognized Commissioner Stewart who spoke concerning the Item.
3. Vice Chairperson Commissioner Octave recognized the City Clerk who spoke concerning the Item.

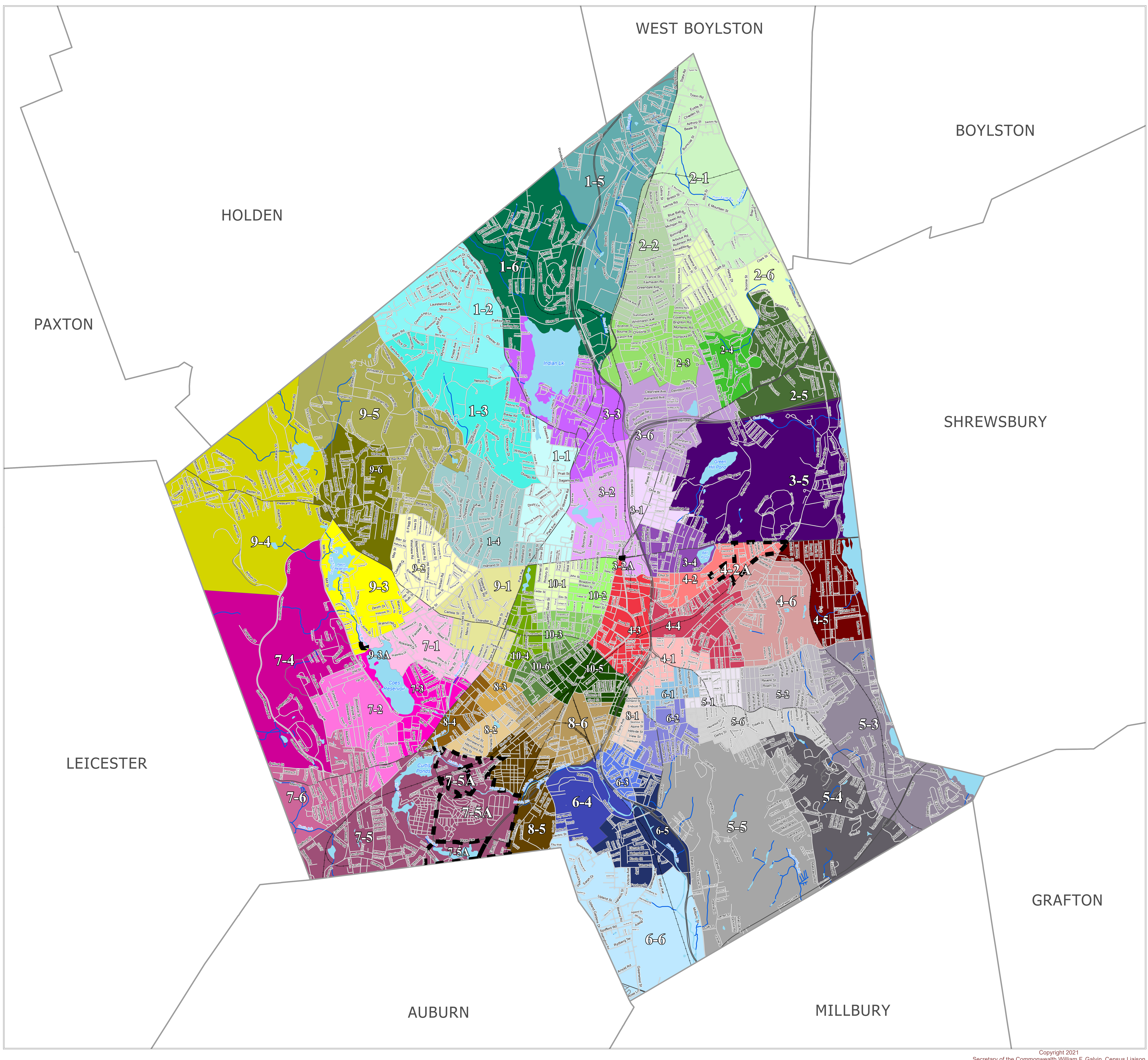
Motion to Adjourn on a Roll call: 3 Yeas and 0 Nays.

Next Meeting Date: Thursday, March 10th 2022 at 5:30pm.

City of Worcester



Map Prepared for the City of Worcester
 Courtesy of William F. Galvin, Census Liaison
 Secretary of the Commonwealth



2020 Population - - 206,518

Minimum 5%	Target Population	Maximum 5%
3,270	3,442	3,614

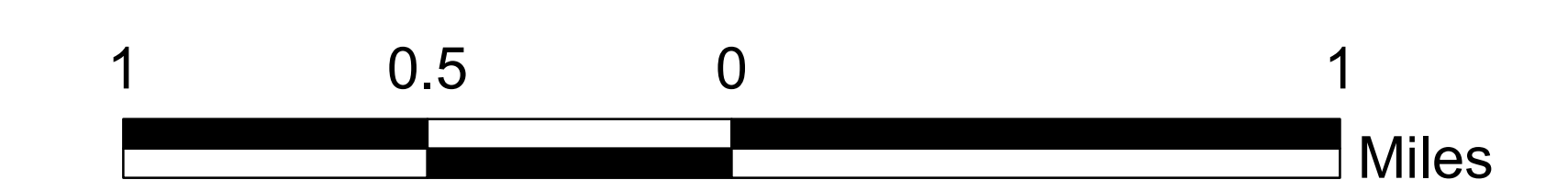
Precinct Boundaries Worcester

Precinct	2020 Population	Variance	Precinct	2020 Population	Variance
1-1	3,585	4.15	6-1	3,271	-4.97
1-2	3,601	4.62	6-2	3,273	-4.91
1-3	3,510	1.98	6-3	3,326	-3.37
1-4	3,271	-4.97	6-4	3,582	4.07
1-5	3,495	1.54	6-5	3,518	2.21
1-6	3,608	4.82	6-6	3,515	2.12
2-1	3,537	2.76	7-1	3,342	-2.91
2-2	3,363	-2.30	7-2	3,330	-3.25
2-3	3,439	-0.09	7-3	3,365	-2.24
2-4	3,552	3.20	7-4	3,402	-1.16
2-5	3,569	3.69	7-5	3,419	-0.67
2-6	3,609	4.85	7-6	3,583	4.10
3-1	3,590	4.30	8-1	3,531	2.59
3-2	3,374	-1.98	8-2	3,503	1.77
3-3	3,607	4.79	8-3	3,375	-1.95
3-4	3,443	0.03	8-4	3,409	-0.96
3-5	3,349	-2.70	8-5	3,425	-0.49
3-6	3,354	-2.56	8-6	3,444	0.06
4-1	3,294	-4.30	9-1	3,275	-4.85
4-2	3,336	-3.08	9-2	3,362	-2.32
4-3	3,323	-3.46	9-3	3,327	-3.34
4-4	3,400	-1.22	9-4	3,613	4.97
4-5	3,311	-3.81	9-5	3,598	4.53
4-6	3,326	-3.37	9-6	3,520	2.27
5-1	3,353	-2.59	10-1	3,552	3.20
5-2	3,423	-0.55	10-2	3,294	-4.30
5-3	3,547	3.05	10-3	3,509	1.95
5-4	3,500	1.69	10-4	3,494	1.51
5-5	3,456	0.41	10-5	3,469	0.78
5-6	3,393	-1.42	10-6	3,374	-1.98

Population is based on the official U.S. 2020 Census block-level data.
 Boundaries effective December 31, 2021

Legend

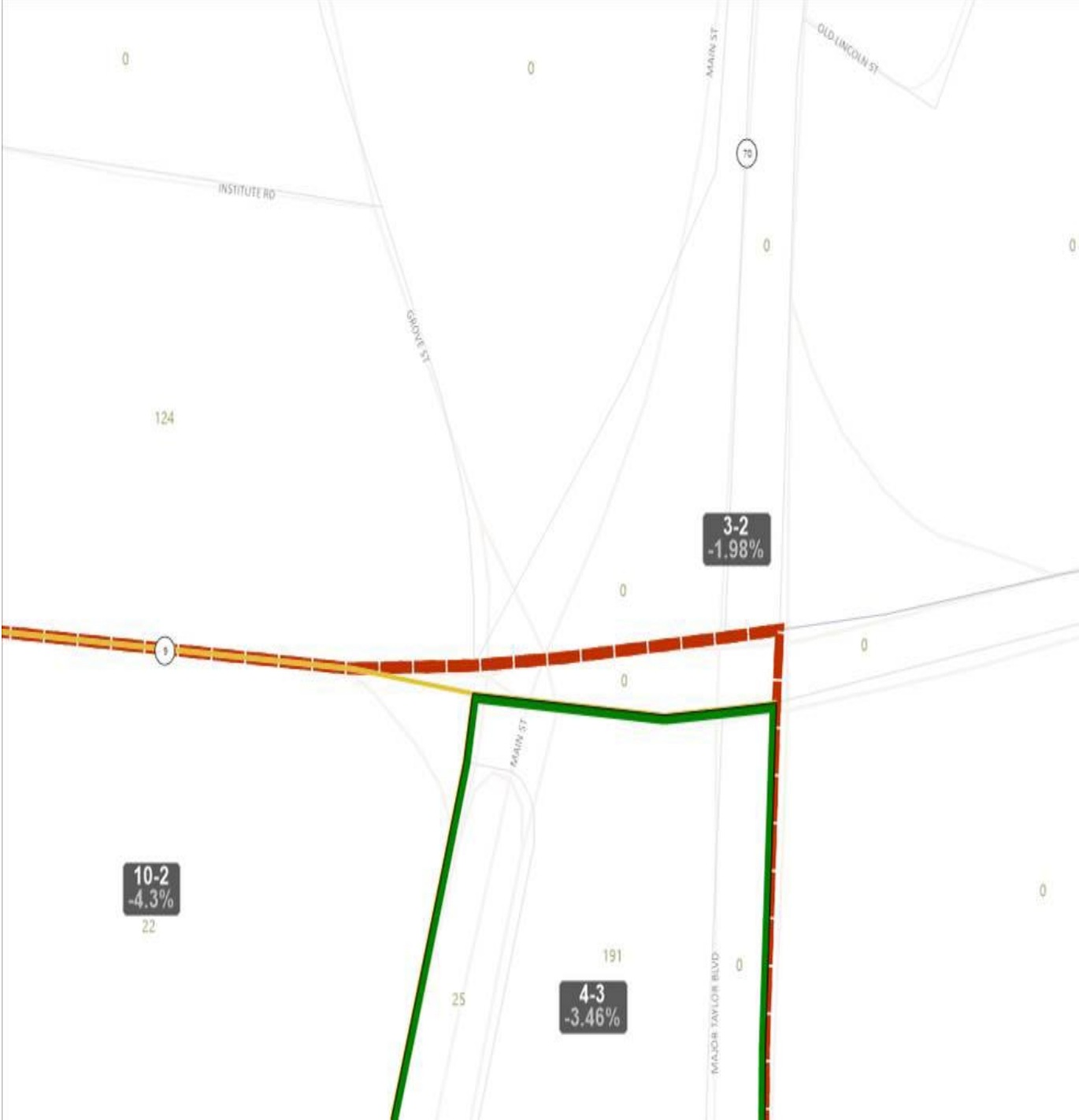
- Sub-Precinct
- Municipal Boundary
- Geographical Features**
 - Major Road
 - Local Road
 - Railroad
 - Other Municipal Features
 - Streams, Rivers
 - Coastal Water, Lakes, Ponds, Major Rivers



9-2A is a sub precinct is merely a body of water with zero population. This was caused by the Senate (blue line) not matching up with your precinct line and the House line (red) by one block, see the image below:



3-2A is a block with zero population, most likely a traffic median that the Census Bureau considers a block, and was caused by the precinct line and the House line being off by one block:



List of Wards, Precincts and Polling Places

Ward	Prnct	Polling Place Name	Polling Place Address
01	01	UNITARIAN UNIVERSALIST CH	90 HOLDEN ST, ENTER FELLOWSHIP HALL
	02	NELSON PLACE SCHOOL	35 NELSON PLACE, GYMNASIUM
	03	ASSUMPTION COLLEGE	500 SALISBURY ST, ENTER LA MAISON FRANCAIS
	04	CONGREGATION BETH ISRAEL	15 JAMESBURY DR, ENTER SOCIAL HALL
	05	MARKET 32, PRICE CHOPPER	72 PULLMAN STREET, ENTER LEFT FRONT DOORWAY
	06		
02	01	SALEM COVENANT CHURCH	215 MOUNTAIN STREET, EAST ENTER SOCIAL HALL AT REAR OF BUILDING
	02	ZION LUTHERAN CHURCH HALL	41 WHITMARSH AVENUE, ENTER LOWER LEVEL HALL FROM LEEDS STREET SIDE OF BUILDING
	03	BURNCOAT HIGH SCHOOL	179 BURNCOAT ST, ENTER GYMNASIUM IN THE BACK OF SCHOOL
	04	LINCOLN VLG. TENANT ASSOC	116 COUNTRY CLUB BLVD, ENTER FROM VICKSBURG AVE
	05	GBV MULTI PURPOSE BLDG	180 CONSTITUTION AVE. 01605
	06		
03	01	BURNCOAT HIGH SCHOOL	179 BURNCOAT ST, ENTER GYMNASIUM IN THE BACK OF SCHOOL
	02	WORCESTER ART MUSEUM	55 SALISBURY ST, MUSEUM CAFE
	02A		
	03	WORCESTER CRAFT CENTER	25 SAGAMORE ROAD, ENTER LOBBY THROUGH MAIN DOOR
	04	WORCESTER TECHNICAL H.S.	1 SKYLINE DRIVE, GYMNASIUM
	05	LIVING WORD CHURCH WORC.	30 TYLER PRENTICE ROAD, ENTER HALL FROM MAIN DOOR
	06		
04	01	MT CARMEL APARTMENTS	50 SHREWSBURY ST, ENTER POLLING LOCATION FROM THE PARKING LOT ON MULBERRY ST
	02	AMERICAN LEGION POST	326 PLANTATION ST, PARKING IS AT THE BACK OF THE BUILDING, ENTER FROM WELL ST
	02A		
	03	BELMONT TOWER APARTMENTS	40 BELMONT ST, ENTER COMMUNITY ROOM FROM PARKING LOT
	04	FRIENDLY HOUSE	36 WALL STREET, ENTER GYM FROM REAR OF BUILDING
	05	LINCOLN PARK TOWER	11 LAKE AVENUE, ENTER COMMUNITY ROOM THROUGH MAIN DOOR
	06		
05	01	ADDISON APARTMENTS	15 ADDISON STREET, ENTER FROM RIGHT SIDE OF BUILDING
	02	OUR LADY OF LORETO PARISH	33 MASSASOIT ROAD, PARISH CENTER, REAR OF THE CHURCH
	03	LAKE PARK COMMUNITY HOUSE	300 LAKE AVENUE, ENTER FROM HAMILTON STREET
	04	BROAD MEADOW BROOK	414 MASSASOIT ROAD, ENTER LEARNING CENTER ON LEFT OF PARKING LOT

List of Wards, Precincts and Polling Places

Ward	Prnct	Polling Place Name	Polling Place Address
05	05	BROAD MEADOW BROOK	414 MASSASOIT ROAD, ENTER FULLER PROGRAM ROOM THROUGH MAIN DOOR
	06		
06	01	WORCESTER SENIOR CENTER	128 PROVIDENCE STREET, ENTER FROM PARKING LOT ON SPURR STREET
	02	WORCESTER SENIOR CENTER	128 PROVIDENCE STREET, ENTER FROM PARKING LOT ON SPURR STREET
	03	BLACKSTONE VISITOR CENTER	3 PAUL CLANCY WAY, ENTER VISITOR CENTER THROUGH 115 MCKEON ROAD
	04	BLACKSTONE VISITOR CENTER	3 PAUL CLANCY WAY, ENTER VISITOR CENTER THROUGH 115 MCKEON ROAD
	05	EMANUEL LUTHERAN CHURCH	200 GREENWOOD STREET, ENTER SOCIAL HALL FROM THE BACK OF THE BUILDING
	06		
07	01	BEAVER BROOK PARK BLDG	15 MANN STREET, ENTER COMMUNITY HOUSE FROM MANN STREET
	02	STEARNS TAVERN	140 MILL ST, ENTER FROM THE BACK OF BLDG
	03	COES POND VILLAGE	39 FIRST STREET, ENTER LOWER LEFT SIDE OF BUILDING
	04	SHAW'S SUPERMARKET	68 STAFFORD STREET, ENTER MAIN DOOR AND TURN LEFT TOWARDS OFFICES
	05	HADWEN PARK CHURCH	6 CLOVER STREET, ENTER COMMUNITY ROOM FROM MAIN DOOR OFF CLOVER STREET
	05A		
	06		
08	01	DEPT. OF INSPECTIONAL SVC	25 MEADE STREET, ENTER LOWER LEVEL THROUGH DOOR FROM MEADE STREET
	02	SAINT PETER'S CHURCH, GYM	929 MAIN STREET, ENTER GYMNASIUM FROM GRAND STREET
	03	SAINT PETER'S CHURCH, GYM	929 MAIN STREET, ENTER GYMNASIUM FROM GRAND STREET
	04	WEBSTER SQUARE TOWERS	1050 MAIN STREET, ENTER COMMUNITY ROOM AT REAR OF BUILDING
	05	SOUTH WORC. NEIGHBORHOOD	47 CAMP STREET, ENTER NEIGHBORHOOD CENTER FROM PARKING LOT IN THE BACK
	06		
09	01	WORC. STATE MAY ST BLDG	280 MAY ST, ENTER FROM MAY ST ENTRANCE (FORMELY TEMPLE EMANUEL SINAI)
	02	WORC. STATE MAY ST BLDG	280 MAY ST, ENTER FROM MAY ST ENTRANCE (FORMELY TEMPLE EMANUEL SINAI)
	03	WORC. STATE MAY ST BLDG	280 MAY ST, ENTER FROM MAY ST ENTRANCE (FORMELY TEMPLE EMANUEL SINAI)
	03A		
	04	SEVENTH-DAY ADVENTIST CHU	2 AIRPORT DRIVE, ENTER FELLOWSHIP HALL FROM AIRPORT DR PARKING LOT
	05	FIRST CONGREGATIONAL CHUR	1070 PLEASANT STREET, ENTER HALL FROM HOWE AVE PARKING LOT

List of Wards, Precincts and Polling Places

Ward	Prnct	Polling Place Name	Polling Place Address
09	06		
10	01	ELM PARK TOWER	425 PLEASANT STREET, ENTER RIGHT SIDE OF BUILDING
	02	ORDER OF AHEPA LODGE	68 CEDAR STREET, ENTER THROUGH FRONT DOOR
	03	MURRAY AVENUE APARTMENTS	50 MURRAY AVENUE, ENTER COMMUNITY ROOM THROUGH FRONT DOOR
	04	MAYSIDE APARTMENTS	26 MAYSIDE LANE, ENTER COMMUNITY ROOM THROUGH FRONT DOOR
	05	YMCA CENTRAL BRANCH	766 MAIN ST, ENTER CONFERENCE ROOM FROM MAIN LOBBY
	06		

Total Number of Polling Places: 64
No. Pages of Printed: 3

*** End of Report ***

Nov 2. 2021 Polling Locations			
Ward	Precinct	Location	Address
1	1	UNITARIAN UNIVERSALIST CHURCH, HALL	90 HOLDEN ST
1	2	NELSON PLACE ELEMENTARY SCHOOL,	35 NELSON
1	3	ASSUMPTION COLLEGE, LA MAISON	500 SALISBURY
1	4	CONGREGATION BETH ISRAEL	15 JAMESBURY
1	5	MARKET 32, LEFT FRONT DR	72 PULLMAN ST
2	1	SALEM COVENANT CHURCH, REAR	215 MOUNTAIN ST
2	2	ZION LUTHERAN CHURCH, LEEDS ST SIDE	41 WHITMARSH
2	3	BURNCOAT HIGH SCHOOL, GYMNASIUM	179 BURNCOAT
2	4	LINCOLN VILLAGE RESIDENTS ALLIANCE,	116 COUNTRY
2	5	GREAT BROOK VALLEY MULTI-PURPOSE	180
3	1	BURNCOAT HIGH SCHOOL, GYMNASIUM	179 BURNCOAT
3	2	WORCESTER ART MUSEUM, CAFÉ	55 SALISBURY ST
3	3	WORCESTER CENTER FOR CRAFTS,	25 SAGAMORE RD
3	4	WORCESTER TECHNICAL HIGH SCHOOL,	1 SKYLINE DR
3	5	LIVING WORD CHURCH, CHURCH HALL	30 TYLER
4	1	MT CARMEL APARTMENTS	50 SHREWSBURY
4	2	AMERICAN LEGION EAST POST	326 PLANTATION
4	3	BELMONT APARTMENTS, REAR,	40 BELMONT ST
4	4	FRIENDLY HOUSE, REAR, GYM	36 WALL ST
4	5	LINCOLN PARK TOWER, COMMUNITY RM	11 LAKE AVE
5	1	ADDISON APARTMENTS, COMMUNITY RM	6 ADDISON ST
5	2	OUR LADY OF LORETO, REAR, PARISH CTR	33 MASSASOIT RD
5	3	LAKE PARK COMM HOUSE, HAMILTON ST	300 LAKE AVE
5	4	MASSACHUSETTS AUDUBON SOCIETY,	414 MASSASOIT
5	5	MASSACHUSETTS AUDUBON SOCIETY,	414 MASSASOIT
6	1	WORCESTER SENIOR CENTER, LUNCH RM	128 PROVIDENCE
6	2	WORCESTER SENIOR CENTER, LUNCH RM	128 PROVIDENCE
6	3	BLACKSTONE CORRIDOR VISITOR CENTER	3 PAUL CLANCY
6	4	BLACKSTONE CORRIDOR VISITOR CENTER	3 PAUL CLANCY
6	5	EMANUEL LUTHERAN CHURCH	200
7	1	BEAVER BROOK COMMUNITY BUILDING	15 MANN ST
7	2	STEARNS TAVERN	140 MILL ST
7	3	COES POND VILLAGE, LOWER LEVEL	39 FIRST ST
7	4	SHAW'S SUPERMARKET	68 STAFFORD ST
7	5	HADWEN PARK CONGREGATIONAL	6 CLOVER ST
8	1	DEPT OF INSPECTIONAL SVCS, LOWER	25 MEADE ST
8	2	ST PETER'S CHURCH, GYMNASIUM	929 MAIN ST
8	3	ST PETER'S CHURCH, GYMNASIUM	929 MAIN ST
8	4	WEBSTER SQUARE TOWERS, COMMUNITY	1050 MAIN ST
8	5	SOUTH WORC. NEIGHBORHOOD CENTER	47 CAMP ST
9	1	WORC. STATE UNIVERSITY, MAY ST BLDG,	280 MAY ST
9	2	WORC. STATE UNIVERSITY, MAY ST BLDG,	280 MAY ST
9	3	WORC. STATE UNIVERSITY, MAY ST BLDG,	280 MAY ST
9	4	WORCESTER SEVENTH-DAY ADVENTIST	2 AIRPORT DR
9	5	FIRST CONGREGATIONAL CHURCH, LOWER	1070 PLEASANT
10	1	ELM PARK TOWER, COMMUNITY RM	425 PLEASANT ST
10	2	ORDER OF AHEPA LODGE	68 CEDAR ST
10	3	MURRAY AVENUE APARTMENTS,	50 MURRAY AVE
10	4	MAYSIDE APARTMENTS, COMMUNITY RM	26 MAYSIDE LN
10	5	YMCA CENTRAL BRANCH	766 MAIN ST